

Advancing Tomorrow's Skills in Midwifery, Perinatal, Neonatal and Maternity Nursing

Simulators and Task Trainers

NEW

MW34
Obstetric Examination
Simulator

MW40
Obstetric Training Simulator
-complete set-

MW35
Cervical Assessment Simulator

MW36
Vaginal Delivery Assistance
Simulator

MW37
Perineorrhaphy Simulator

MW38
Uterine Involution Assessment
Simulator

MW32
NCPR Simulator

MW21
NCPR Simulator Plus

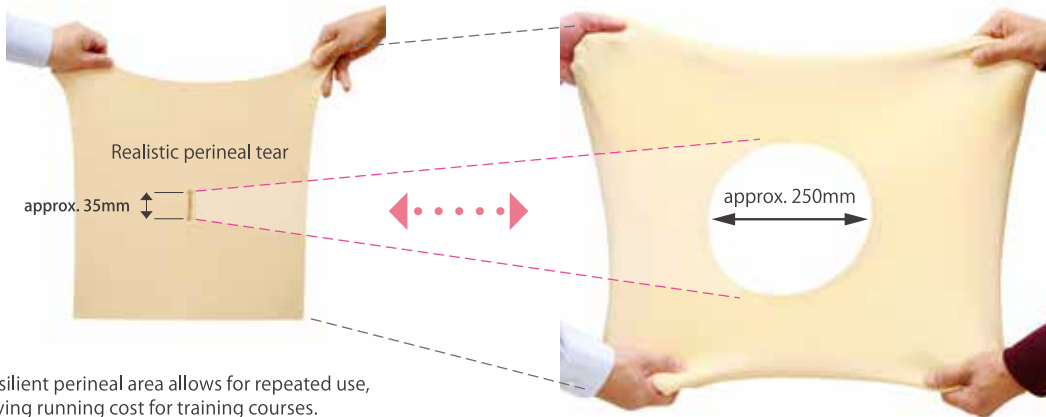
MW33
ELBW Infant Simulator



Kyoto Maternity Series: Innovative Features

1

Genital area made of innovative material that excels in elasticity, durability and resilience while offering repeated true-to-life hands-on training in pelvic examination and birthing.



2

Smooth delivery of the baby and placenta

- ① Optimal lubricant
- ② Genital area that excels in elasticity, durability and resilience
- ③ Vaginal canal accommodates to the size of the neonate
- ④ Handle steadies the maternal body

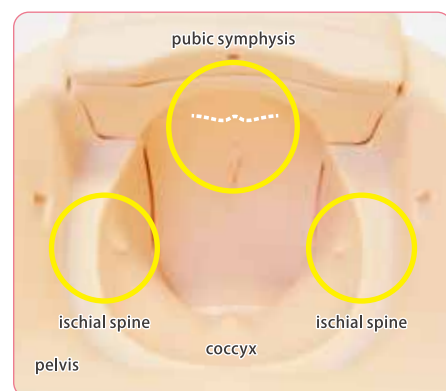


3

Landmarks on the pelvis that facilitate integration of anatomical knowledge and procedural skills

Anatomically correct vaginal canal, ischial spines, pubic symphysis and coccyx allow for observation and palpation of the landmarks in relation to fetal positions, promoting anatomical understanding for acquiring midwifery skills.

Station zero, the line that connects ischial spines, can be recognized.



Kyoto Kagaku YouTube

Search

A range of innovative training simulators from

NEW

MW34 Obstetric Examination Simulator	4—5
MW40 Obstetric Training Simulator -complete set-	6—7
MW35 Cervical Assessment Simulator	8
MW36 Vaginal Delivery Assistance Simulator	9
MW37 Perineorrhaphy Simulator	10
MW38 Uterine Involution Assessment Simulator	11
MW32 NCPR Simulator	12
MW21 NCPR Simulator Plus, MW33 ELBW Infant Simulator	13

Obstetric time line

NEW MW34 Obstetric Examination Simulator

US-10 Female Pelvic Ultrasound Phantom

US-7a Fetus Ultrasound Examination Phantom "SPACE FAN-ST"

NEW MW35 Cervical Assessment Simulator

NEW MW36 Vaginal Delivery Assistance Simulator

Labor Period

Pregnancy Period

pregnancy period to neonatal period

Pregnancy Period	US-7a Fetus Ultrasound Examination Phantom "SPACE FAN-ST" US-10 Female Pelvic Ultrasound Phantom, MW1 Pitting Edema Simulator	14
Labor Period	M83 Suture Practice Trainers -full set	15
Neonatal Period	M59 M63 Newborn Bathing and Nursery Care Model, M12 Breast Massage Model US-14a / US-14b Ultrasound Neonatal Head Phantom US-13 Infant Hip Sonography Training Phantom	16



NEW MW37 Perineorrhaphy Simulator



M83 Suture Practice Trainers - full set



NEW MW38 Uterine Involution Assessment Simulator

Postpartum Period



NEW MW32 NCPR Simulator



NEW MW33 ELBW Infant Simulator



US-13 Infant Hip Sonography Training Phantom



US-14a / US-14b Ultrasound Neonatal Head Phantom



NEW MW21 NCPR Simulator Plus



M59 M63 Newborn Bathing and Nursery Care Model

Neonatal Period



M58 Vital Signs Baby II

MW34

NEW

Obstetric Examination Simulator

Obstetric Examination Simulator is a true-to-life representation of a 39-40 weeks pregnancy torso, that allows training in fundamental examination skills for prenatal checkup including palpation, fetal heart auscultation, and abdominal measurements.



Specifications

Life-size pregnant torso
 Manikin Size: W30 x D60 x H30cm
 Manikin Weight: 11.2kg
 Materials: Soft resin, hard plastic
 Power: AC100-240V (main unit)
 Power Consumption: 1W

Set Includes

1 pregnancy torso
 1 AC adaptor
 1 remote control
 1 talcum powder
 1 instruction manual

Features

- Soft and elastic tissue material that provides true-to-life sensation of palpation
- Anatomically correct pelvis and fetus
- A variety of fetal position, orientation and lie with one fetal unit
- Authentic fetal heart sounds recorded from a real fetus

Training skills

Palpation

Leopold's maneuvers
 CPD assessment (Seitz method)

Auscultation

- ▶ Sounds recorded by a Doppler stethoscope
 - Umbilical blood flow
 - Umbilical blood flow and fetal heart sounds (posterior and anterior)
 - Fetal heart sounds
- *Auscultation using a Doppler stethoscope is not possible.
- ▶ Sounds recorded through a conventional stethoscope

Measurements

Maternal abdominal girth
 Fundal height
 External pelvimetry

Training skills

Palpation

(Leopold's maneuvers, CPD assessment)

Leopold's maneuvers

Palpate parts of the fetus such as head, buttocks and the trunk through the steps from the first to the fourth maneuvers to assess fetal lie, presentation and position as well as degree of fetal descent.



First maneuver



Fourth maneuver

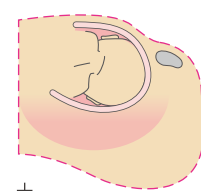
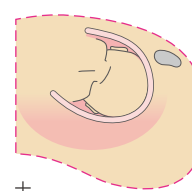
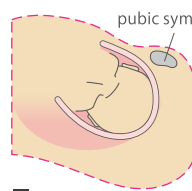
Anatomically correct landmarks of pelvis and the fetus. The innovative tissue material provides realistic tactile feeling. The fetal unit allows various fetal lie, presentation and position and offers training opportunity of CPD assessment with Seitz method.

CPD assessment (Seitz method)

Height of fetal head against the pubic symphysis can be changed by rotating the fetal unit to prepare different scenario for CPD assessment (Seitz method).



CPD assessment (Seitz method)



Training skills

Auscultation (fetal heart sounds)

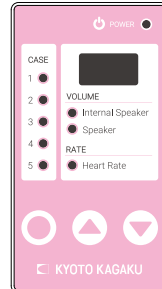
Sounds recorded by Doppler and conventional stethoscope are prepared for training. Sounds are controlled wirelessly by the remote controller, including selection of sounds, volume and heart rate setting as well as switching between internal and external speakers.



Auscultation with a Pinard stethoscope



Auscultation with a conventional stethoscope



Remote control

Remote control

- Five variations of sounds
 - ▶ Sounds recorded by conventional stethoscope
 - Fetal heart sounds
 - ▶ Sounds recorded by Doppler stethoscope
 - Fetal heart sounds
 - Umbilical blood flow
 - Umbilical blood flow with fetal heart sounds (posterior and anterior)
- *Auscultation using a Doppler monitor is not possible.
- Volume control
- Control of fetal heart rate (60-180)
- Switching between internal and external speakers

Training skills

Measurements (maternal abdominal girth, fundal height, external pelvimetry)

Maternal body measurements to estimate fetal weight, development and change in the volume of amniotic fluid can be performed on the manikin. Anatomically correct landmarks include pubic symphysis, navel, xiphoid process, iliac crest, and the greater trochanters.

Maternal abdominal girth



Fundal height



A variety of external pelvimetry

Distantia spinarum
(distance measured between iliac spines)Distantia cristarum
(distance is measured between the prominent points of iliac bones)Distantia trochanterica
(distance between the prominent parts of trochanter major)

External oblique diameter

Replacement parts:

(11414-010) Skin cover for MW34

MW40

NEW

Obstetric Training Simulator -complete set-



Features

For all training skills

Genital area made of innovative material that excels in elasticity and durability, and offers repetitive training opportunity.



Delivery assistance

Anatomically correct vaginal canal, ischial spines pubic symphysis and coccyx that facilitate training with anatomical understanding.



Elastic external genitalia, realistic shape of vaginal canal and the holding handle for the maternal body facilitate simulating a smooth delivery.

Cervical examination

Interchangeable five stages of cervical dilation module can be installed with a single action. Descent of the fetal head can also be set.

Anatomically correct landmarks including the ischial spine and the pubic symphysis.

Anterior fontanelle can be touched to determine the fetal position.



Perineorrhaphy (perineal repair)

Repetitive suture training for the first-degree perineal tears.



Set Includes

Common Components

- 1 maternal body
- 1 genitalia unit (for pelvic examination and delivery assistance)
- 1 talcum powder
- 3 lubricant (150ml)
- 1 instruction manual

Parts for pelvic examination

- 1 vagina unit
- 1 set of cervical dilation inserts (5 variations)
- 1 holder for the cervical dilation inserts

Parts for Delivery Assistance

- 1 fetus
- 1 placenta
- 3 umbilical cords for omphalotomy
- 1 tray
- 5 velamen sheets

Parts for Perineorrhaphy

- 1 genitalia unit (for perineorrhaphy)

Comprehensive training set with the platform of the maternal body for skills training in pelvic vaginal examination during labor and delivery assistance

Cervical examination

Training Skills

- Cervical examination
 - Determination of station using landmarks of the ischial spine and the pubic joint to assess the descent of the body
 - Assessment of cervical dilation
- Speculum examination
- Procedures of observation and cervical cytology
- Procedures of urinary catheterization



Pelvic vaginal examination



Urinary catheterization

For replacement parts, refer to page 8.

Delivery assistance

Training Skills

- Delivery assistance for different delivery positions (dorsal, all-fours)
- Perineal protection
- Delivery of fetus (forceps delivery, vacuum extraction)
- Clamping, tying and cutting of the umbilical cord
- Delivery of the placenta
- Insertion of a urinary catheter



Perineal protection



Delivery assistance



Cutting the umbilical cord



Delivery of the placenta

For replacement parts, refer to page 9.

Perineorrhaphy (perineal repair)

Training Skills

- Perineorrhaphy (perineal repair)
 - Single interrupted suture
 - Vertical mattress suture



For replacement parts, refer to page 10.

NEW

MW35

Cervical Assessment Simulator



External genitalia made of the new material and anatomically correct vaginal canal provides true-to-life hands-on training in cervical examination to determine Bishop score from the final stage of pregnancy to the first stage of the labor.



Set includes

- 1 maternal body
- 1 genitalia unit
- 1 vagina unit
- 1 set of cervical dilation inserts (5 variations)
- 1 holder for the cervical dilation inserts
- 3 lubricant (150ml)
- 1 talcum powder
- 1 instruction manual

Specifications

- Life-size pregnant abdomen and pelvic area
- Manikin Size: W74 x D44 x H33.5cm
- Manikin Weight: 10.3kg
- Materials: Soft resin, hard plastic

Features

- Genital area made of innovative material that excels in elasticity, durability and resilience offers repetitive training opportunities.
- Interchangeable five cervical dilation inserts can be set by a single action.
- Anatomically correct landmarks including the ischial spines and the pubic symphysis
- Anterior/posterior fontanelles to determine the fetal position

Training Skills

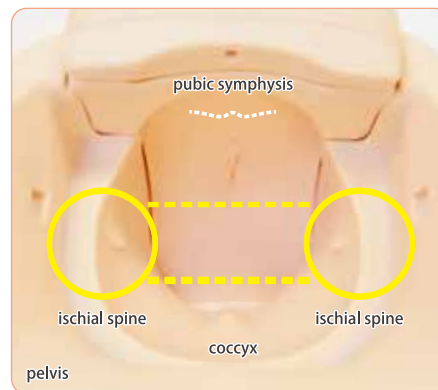
- Cervical examination
 - Determination of bishop score (cervix score) using landmarks of the ischial spines and the pubic symphysis
 - Assessment of cervical dilation
 - Procedures of urinary catheterization
 - Procedures cervical cytology
- Speculum examination

Key Features

External genitalia that excels in elasticity, durability and resilience



Ischial spines and pubic symphysis to determine fetal station



Station zero, the line that connect ischial spines can be recognized.



Cervical dilation insert can be attached by a single action.



Descent of the fetus can be set by the lever on the holder. (from -3 to +3)

Replacement parts:

(11415-010) 1 set of cervical dilation inserts (5 variations)

(11415-030) 1 genitalia unit (for pelvic examination and delivery assistance)

(11415-020) 3 Lubricant (150ml)

MW36

Vaginal Delivery Assistance Simulator

NEW

Elastic external genitalia and realistic shape of the vaginal canal provide a highly realistic training session allowing the flow of skills from perineal protection to the delivery of the placenta.

Specifications

Life-size pregnant abdomen and pelvic area
 Manikin size: W74 x D44 x H33.5cm
 Manikin weight: 11.2 kg
 Materials: Soft resin, hard plastic

Set Includes

1 maternal body
 1 genitalia unit (for pelvic examination and delivery assistance)
 1 fetus
 1 placenta
 3 umbilical cords for omphalotomy
 1 talcum powder
 5 velamen sheets
 3 lubricant (150ml)
 1 tray
 1 instruction manual

Features

- Genital area made of innovative material that excels in elasticity, durability and resilience offers repetitive training opportunities.
- Anatomically correct vaginal canal, ischial spines and pubic joint that facilitate training with anatomical understanding
- Elastic external genitalia, realistic shape of the vaginal canal and the holding handle for the maternal body facilitates simulating a smooth delivery

Training Skills

- Delivery assistance for different delivery positions (dorsal, all-fours)
- Perineal protection
- Delivery of the fetus (forceps delivery, vacuum extraction)
- Clamping, tying and cutting of the umbilical cord
- Delivery of placenta
- Inspection of the velamen



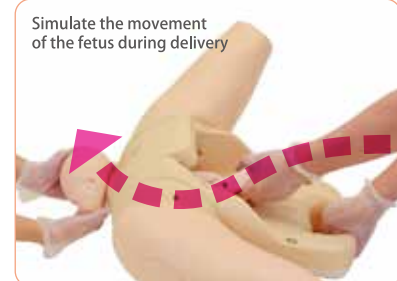
Key Features

Realistic delivery of a baby with an elastic and resilient external genitalia



Skills training associated with anatomical understanding

Position of the fetus against the pelvis can be observed under direct vision during the delivery.



Two possible birth positions

Dorsal position
 All-fours position

Replacement parts:

(11415-030) 1 genitalia unit (for pelvic examination and delivery assistance)	(11416-010) 1 fetus
(11416-020) 1 placenta	(11416-030) 10 umbilical cords for omphalotomy
(11416-040) 5 velamen sheets	(11415-020) 3 lubricant (150ml)

Optional Parts:

(11417-020) 1 genitalia unit (perineorrhaphy) *skin included

NEW

MW37

Perineorrhaphy Simulator



Represents a perineal tear that occurs in a vaginal delivery. The innovative tissue material allows repetitive trainings.

Features

- Suture training for the first-degree perineal tears
- Genital area that excels in elasticity, durability and resilience for multiple training opportunities.
- Optional genitalia unit for training with the maternal body.

Specifications

Life-size female genitalia
Manikin Size: W16 x D23 x H20.5cm
Manikin Weight: 1.5kg
Materials: Soft resin

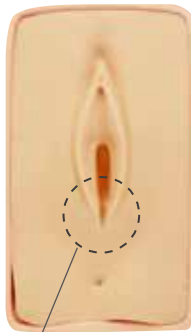
Set Includes

1 genitalia insert
1 supporting holder
1 talcum powder
1 instruction manual

Training Skills

● Perineorrhaphy (perineal repair)

- Single interrupted suture
- Vertical mattress suture



First-degree perineal tear



Genitalia skin can be mounted on the genitalia unit (optional part) for realistic training with the maternal body.

Replacement parts:

(11417-010) 2 genitalia inserts (perineorrhaphy)

Optional Parts:

(11417-020) Genitalia unit (frame, skin)

MW38

Uterine Involution Assessment Simulator

NEW

Puerperal lower torso with anatomically correct landmarks and elastic abdominal wall facilitates realistic training in assessment of uterine involution in the early puerperium.

Features

- Anatomically correct landmarks for palpation including the pubic symphysis, umbilicus, and the uterus
- Soft and elastic abdominal wall that permits highly realistic palpation to assess the degree of uterine involution and to measure fundal height
- Four variations of uterine fundal inserts that are interchangeable

Training Skills

- Assessment of uterus in early puerperium.
- Fundal height measurement with a measure tape and palpation of uterine fundus
- Perineal cleansing and assessment
- Demonstration of postpartum massage
- Assessment of anal prolapse

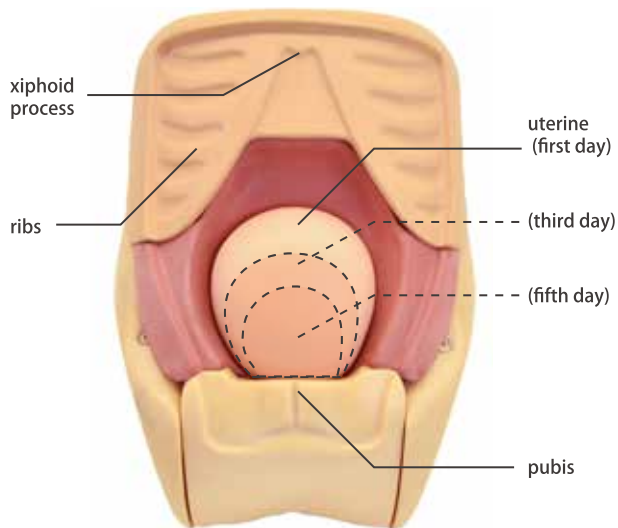


Specifications

Life-size puerperal lower torso
Manikin Size: W28 x D42 x H26cm
Manikin Weight
Materials: Soft resin

Set includes

1 puerperal lower torso
1 set of uterine inserts (4 variations)
1 talcum powder
1 instruction manual



4 variations of uterine inserts



Normal (boundary between abdominal wall and uterine is hard and clear) **Abnormal** (uterine is soft or unclear)

Palpation of uterine fundus



Measurement of fundal height



Replacement parts:

(11418-010) 1 skin cover (for uterine involution assessment)

(11418-020) 1 set of uterine inserts (4 variations)

NEW

MW32

NCPR Simulator



NCPR Simulator is a full term newborn manikin that facilitates training of basic skills in neonatal care. The simulator is also suitable for a NCPR training course.

Specifications

Life-size four week old newborn
 Manikin Size: 50cm
 Manikin Weight: 2kg
 Materials: Soft resin

Set Includes

1 newborn manikin
 1 lubricant
 1 instruction manual

Features

- Full body newborn manikin with ribs, bronchi, lungs, esophagus, and umbilical cord
- Airway management training with confirmation of bilateral/unilateral ventilation
- Soft and realistic umbilical cord with 3 vessels for an array of skills including venous and arterial line placement as well as blood sample collection
- Feeding tube insertion and confirmation of the tube placement
- Chest compression

Training Skills

● Basic neonatal care

- Changing body position, hygiene
- Palpation of the anterior fontanelle
- Clamping, tying and cutting of the umbilical cord.
- Umbilical catheterization and care
- Tube feeding (nasal and oral)
 *tube placement can be confirmed by auscultation
- Suction (nasal, oral)



Palpation of the anterior fontanelle



Umbilical cord care, umbilical catheterization and blood sampling (one vein and two arteries)



Tube feeding (nasal and oral) (tube placement confirmation with bubble sounds)

*The product is not designed for bathing with real water.

● Resuscitation

- Chest compression
- Endotracheal intubation
- BVM ventilation



Chest compression



Endotracheal intubation (confirmation of unilateral /bilateral ventilation)



BVM ventilation (rise of the chest)



Airway suctioning (nasal and oral)

Recommended Devices

Feeding tube: 5fr.
 Suction catheter: 5fr
 Endotracheal tube: 3.0mm ID
 Laryngoscope: #0
 BVM: 000

*for venous access training, MW21 NCPR Simulator Plus is available.

Replacement parts:	Replacement Parts (for MW21 only) :
(11400-010) 1 mask for MW21, MW32	(11400-040) 1 right arm skin
(11400-020) 1 chest skin for MW21, MW32	(11400-050) 1 right leg skin
(11400-030) 4 umbilical cords for MW21, MW32	(11400-060) 4 vein tubes for right arm
(11229-050) 1 lubricant	(11400-070) 4 vein tubes for right leg
	(11388-400) 10 simulated blood sticks (swab type)

MW21

NCPR Simulator Plus

NEW

NCPR Simulator Plus facilitates training of a variety of clinical skills required in NICU. The simulator is also suitable for the neonatal CPR training course.



Features

- Training features of PI catheter insertion from right leg and arm are added to MW32 NCPR Simulator

Training Skills

- In addition to the training features of NCPR Simulator, NCPR Simulator Plus allows additional skills trainings.
- IV access with transilluminator guidance
Basilic vein, dorsal vein (right arm/hand)
Saphenous vein, popliteal vein (right leg)

Specifications

Life-size four week old newborn
Manikin Size: 50cm
Manikin Weight: 2kg
Materials: Soft resin

Set Includes

- 1 newborn manikin
- 1 lubricant
- 1 instruction manual



PI catheter insertion
(vein localization using a transilluminator is possible)



Recommended Devices

Feeding tube: 5fr.
Suction catheter: 5fr
Tracheal tube: 3.0mm ID
Peripheral venous catheter
28G x 30cm
Laryngoscope: #0
BVM: 000
Umbilical catheter: 5fr., 30cm

MW33

ELBW Infant Simulator

NEW

ELBW Simulator offers training opportunity for fundamental skills in caring an extremely low birth weight infant.



Features

- A male infant of 26-29 weeks gestational, 900g weight
- Resuscitation training including chest compression and endotracheal intubation.
- Incorporated anatomies such as bronchi, esophagus and stomach allows for training in basic skills.
- Articulated head and neck

Training Skills

- Changing body position, hygiene care in an incubator
- Assessment and measurement of whole body
- OG and NG Tube placement
- Insertion of urinary catheter
- BVM ventilation
- Chest compression
- Endotracheal intubation
- Nasal CPAP

*The product is not designed for bathing using water

Recommended Devices

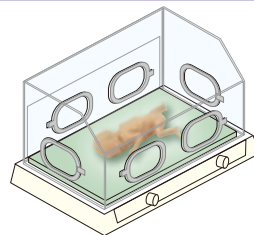
Feeding tube: 3fr.
Suction catheter: 3fr
Tracheal tube: 2.0-2.5mm ID
Laryngoscope: #00
Urinary catheter: 6fr
BVM: neonatal (small)

Specifications

A life size male infant
(26-29 weeks gestational)
Manikin Size: 35cm,
Head circumference 28cm
Manikin Weight: 0.9kg
Materials: Soft resin

Set Includes

- 1 ELBW manikin
- 1 lubricant
- 1 instruction manual



Positioning in an incubator
(maintaining functional position)



Tracheal intubation
(confirmation of unilateral/bilateral ventilation)



Chest Compression



Procedures of tube feeding,
oral and nasal airway suctioning

Replacement Parts



1 mask for MW33
11413-010



1 lubricant
11229-050

US-7a

Fetus Ultrasound Examination Phantom "SPACE FAN-ST"



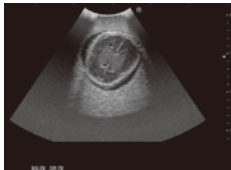
Fetus ultrasound phantom with a full skeletal structure

Features

- High quality training for routine second trimester screening
- The oval shape phantom abdomen that can be set in four different positions

Training Skills

- Fetal size assessment: BPD, AD, AC and FL
- Measurement of amniotic fluid volume (AFV)
- Determination of fetal position
- Assessment of each body part
- Assessment of umbilical cord and the placenta
- Determination of sex (fetus is a male)



Fetal size



Assessment : BPD, AC, AC and FL



FL



Amniotic fluid volume



Umbilical cord

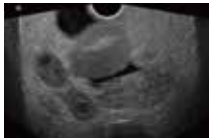
US-10

Female Pelvic Ultrasound Phantom

Product Supervision : Charlotte Henningsen, MS, RT(R), RDMS, RVT, FSDMS, FAIUM
Chair & Professor - Sonography Department
Adventist University of Health Sciences



Ectopic Pregnancy Phantom



Female pelvic phantom with 2 screening methods

Features

- Realistic pathology for transvaginal ultrasound training as well as transabdominal scanning
- Anatomically correct and life-like images
- 2 of interchangeable phantom inserts for differing pathologies

Set Variations :

(US-10a) Female Pelvic Ultrasound Phantom

(includes a normal unit, an ectopic pregnancy unit, and a pathology unit)

MW1

Pitting Edema Simulator



Five variations of pitting edema examples

Features

- Grades of the edemas based on "Mosby's Guide to Physical Examination (7th ed.)" by the degree of response to pressure and by depth of indentations
- The edema modules that can be attached to the lower thighs of an SP or a training manikin
- The detachable fibula plate facilitates training of the soft bases

M83

Suture Practice Trainers -Full set-



Various types of skin models to improve basic suturing skills

Features

- The artificial skin that can be cut easily at any site to prepare a new wound
- The skin is made of soft yet durable material
- Arched support holds skin pads in place during suturing
- Instruments for the training are included in the package

M59 / M63

Newborn Bathing and Nursery Care Model



Multipurpose newborn for skills training

Features

- Life-like, life-size newborn model
- Non-rigid neck flexibility
- Anterior and posterior fontanelles
- Limbs can be bent and stretched
- Waterproof: the model has a seamless, one-piece structure
- Removable umbilical cord
- Available with male and female models

M58

Newborn Vital Signs Examination Simulator



Life-size newborn manikin for basic vital sign assessments

Features

- Arterial pulse at wrists, neck and temples
- Rectal temperature measurement
- Heart sounds recorded from actual patients and synchronized with arterial pulses
- Control unit to adjust the vital signs

US-14a / US-14b

Ultrasound Neonatal Head Phantom

World's First Ultrasound Neonatal Head Phantom

Head ultrasound is one of most difficult scanning skills, and trainees have few opportunities for training. These head phantoms provide repetitive training opportunities on both normal and abnormal findings.

Training Skills

- Scanning of brain anatomy in sagittal (angled parasagittal)
- Coronal and transverse planes via anterior and posterior fontanel as well as temporal windows



US-14a

Normal type



Features

- Providing repetitive training opportunities of neonatal head ultrasound.
- An accurate newborn's cerebral anatomy facilitates a realistic user experience.

Anatomies

- Skull, Anterior fontanel, Posterior fontanel, Temporal windows, Cerebrum, Cerebellum, Brain-stem, Lateral ventricle, Third ventricle, Fourth ventricle, Septum lucidum

US-14b

Abnormal type



Features

- Providing the training opportunities of neonatal head ultrasound with hydrocephalus, in which the shape of the skull is altered due to intracranial pressure.

Anatomies

- Skull, Anterior fontanel, Posterior fontanel, Temporal windows, Cerebrum, Hypertrophied lateral ventricle

US-13

Infant Hip Sonography Training Phantom



Best tool to teach Graf's method.

Features

- The full body manikin for hip sonography of 6-week-old infant.
- Key landmarks can be recognized under ultrasound.
- Bilateral hips for examination.

Training Skills

- Recognition of ultrasound landmarks for hip sonography.
- Visualization of standard, anterior and posterior planes.
- A flow of infant hip-sonography.



WORLDWIDE INQUIRIES & ORDERING

 <http://www.kyotokagaku.com>

 rw-kyoto@kyotokagaku.co.jp

KYOTO KAGAKU HEAD OFFICE & FACTORIES

15 Kitanekeya-cho, Fushimi-ku, Kyoto 612-8388,
JAPAN

 +81-75-605-2510  +81-75-605-2519

KYOTO KAGAKU AMERICA INC.

North and South American regions

3109 Lomita Boulevard, Torrance, CA 90505-5108,
USA

 1-310-325-8860  1-310-325-8867

KYOTO KAGAKU Co., Ltd Hong Kong Representative Office

Level 60, One Island East, 18 Westlands Road,
Island East, Hong Kong

 +852-3978-1365  +852-3978-1199